

Kythera Hiking



Uncovering the Kythera Hiking trail between Mitata and Kypriotianika (TRAIL M34)

www.kytherahiking.gr

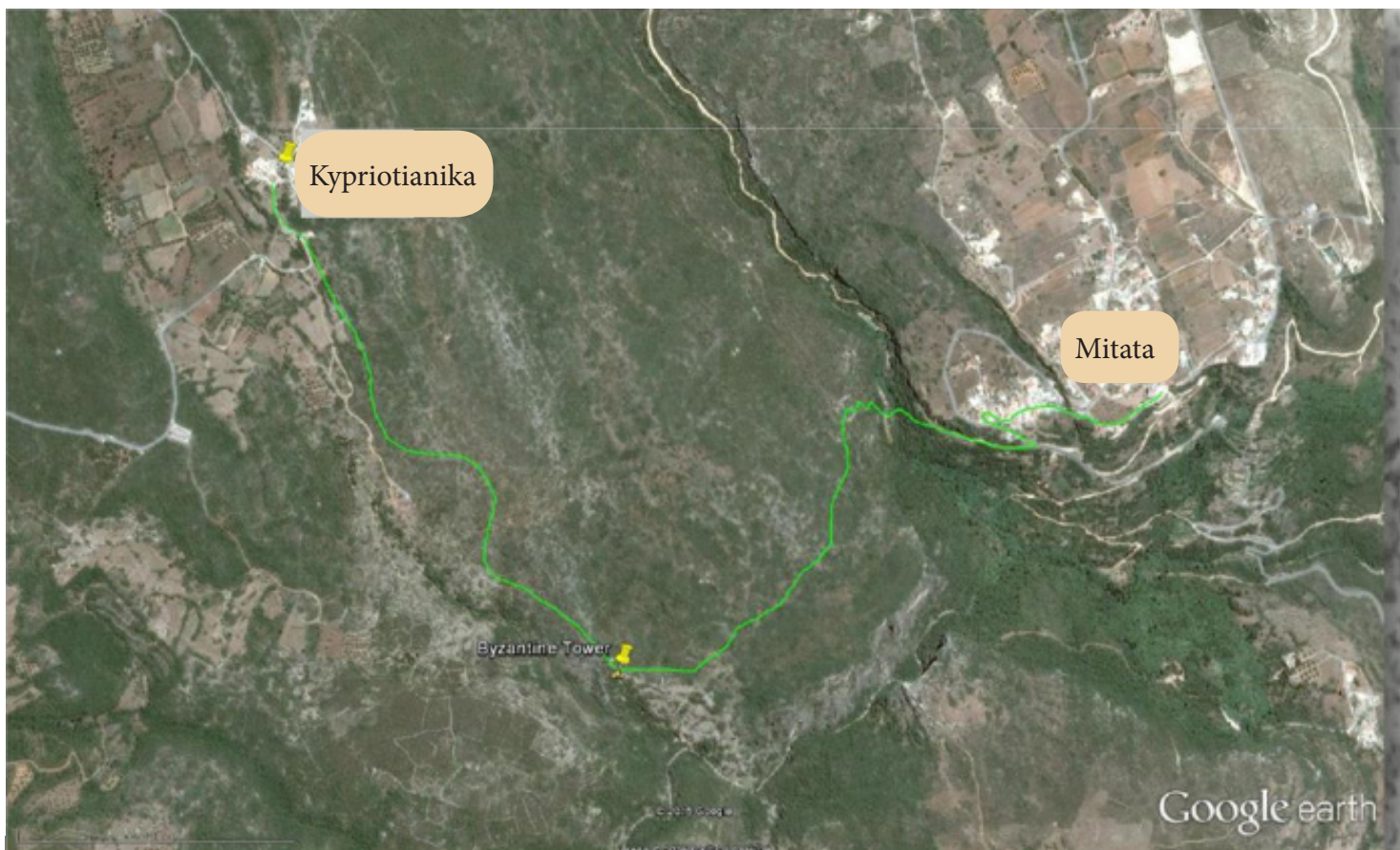
In February 2015, the Kythera Hiking team, in co-operation with Paths of Greece (www.pathsofgreece.gr), has searched for the lost trail between Kypriotianika and Mitata villages. After two days of difficult explorations, using army maps, information from the locals as well as GPS technology, the trail was found under dense vegetation.

It is a very interesting trail, linking two picturesque villages. The trail passes by the Byzantine church of Agia Varvara, a Byzantine Tower in ruins and old habitations (probably a byzantine settlement). Some parts of the trail offer amazing views to the gorge of Tsakonias.

The trail is covered by dense vegetation from Kypriotianika till the valley of Tsakonias. To uncover it, it involves a large amount of work. Sign-posting it as well might prove hard in some areas, due to the fact that the places where the signs will be installed are not reachable by car.







Map of the trail

After research, we estimate that the cost of bringing the trail back to life will be 5.600 Euros. As it is an important trail, and since many hikers on Kythera have been requesting it, we believe in the importance of opening it. The KIPA foundation has made the opening of this trail a priority.

Any donations would be greatly appreciated. Donors of over 1500 euros will be mentioned on the introduction signs at the beginning of the trail (both in Mitata and Kypriotianika).

Donors of smaller amounts will be listed on our website.

Bank Account for donations:

ETHNIKI BANK

Beneficiary: KYTHIRAIKON IDRYMA
POLITISMOU KAI ANAPTYKSIS

IBAN: GR38 0110 3800 0000 3802 9603 032

BIC/SWIFT: ETHNGRAA

Account number: 380/296030-32

NOTE: Please mention "TRAIL M34" on the transfer or for further information, please contact us here: info@kytherahiking.com